



Your Partner For Business Process Automation

Liberate Your Business Processes From Your ERP With

PROCESS[®]

Get Innovative

Get Agile

Supplier Portal
Barcodes/RFID **Maintenance**
JIT/JIS **Production & Process Data Collection**
Material Flows **Kanban** Throughput **Social Network**
Logistics Time to Repair **Integration**
Competitive Advantage **Efficiency** **ERP**
End-to-End Processes **Real Time** Exception Handling
Process Workflow **Cloud** IoT Visualisation **Agility**
Fast Changing Environment **Innovation** **Differentiation**
Integration of Legacy Apps **Industry 4.0** Off-Line Operation
Operational Expenses **OEE** ROI **Big Data** **Poka Yoke**
Traceability **WMS** Effectiveness
Mass Customizing **Mobile** **Automation**
Process Intelligence Time to Delivery **Business Intelligence**
Virtualization **Inventory** Costs **Easy usable**
Production Confirmation **Process Insight** **Cash Flow**
System of Records **Productivity** Genealogy/Birth certificate
Setup Time Working capital Business Activity Monitoring
Scheduling Demand Driven **Continuous Improvement**
Responsive Business **Process Performance Measurement**
Process Visibility Bottleneck Mobile Quality Control
Individualization of Products and Services
Constraint End-to-end Process Automation

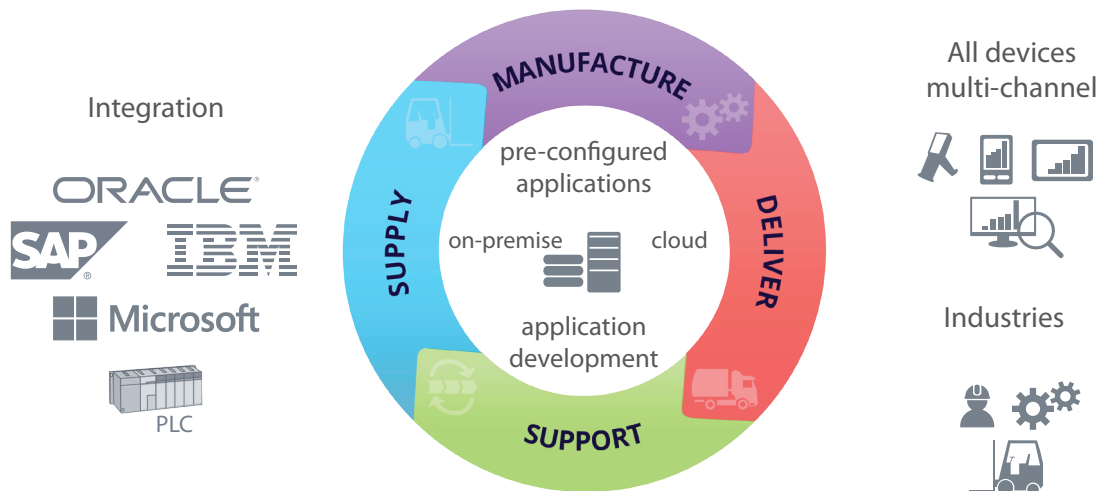
Build Applications For Changing Business

East-Gate has acquired the experience and knowledge in challenging process automation and system integration projects in large manufacturing industries across the Western and Eastern Europe.

The solutions from East-Gate typically extend the functionality of the ERP systems to support the specific and innovative processes and to give the customers the competitive advantage. These solutions integrate the ERP with the shop-floor seamlessly while still preserving the underlying ERP data and logic integrity.

Gartner about East-Gate

(The customers) have all used the PROC55 BPM Suite from East-Gate in core mission-critical processes with human control and some relevant integration points to SAP ERP system, but many integration points to legacy systems as well as to the shop floor equipment in areas of detailed work scheduling, production and quality control, material flow control, warehouse management, and a lot of supporting processes like product tracking, accident control, planning of remedy materials, plant maintenance...



Improve Business Performance

● Scheduling

Detailed scheduling
of production operations
Integration of maintenance
orders
Optimization of setup times
Automatic and manual
scheduling
Customized algorithms

● Manufacturing

Allocation of production
operations to machines
Production control
Work-In-Progress processing
Production confirmation
Scrap registration and evaluation
Traceability
Process and machine data
collection
Process visualization and
measurement (KPIs incl. OEE)
Downtime analysis
Integration of testing
and measuring
Quality assurance and control
ERP integration

● Logistics/Warehouse

Supplier Portal (Web EDI)
Management of external and
consignment stocks
Goods receipt with incoming
goods inspection
Warehouse management system
(WMS)
Mobile warehouse operations
(1D/2D codes, RFID)
Production Supply
Packaging management
Shipment
JIT, JIS
Mobile inventory
Integration of automatic
warehouse systems
ERP integration

● Workflows

Human task-centric workflows
Purchase Requisition and
purchase Order approval
workflow
Invoice approval workflow

● Customer Applications

Fast and efficient development
of specific industry solutions
(customer-tailored)

● Maintenance

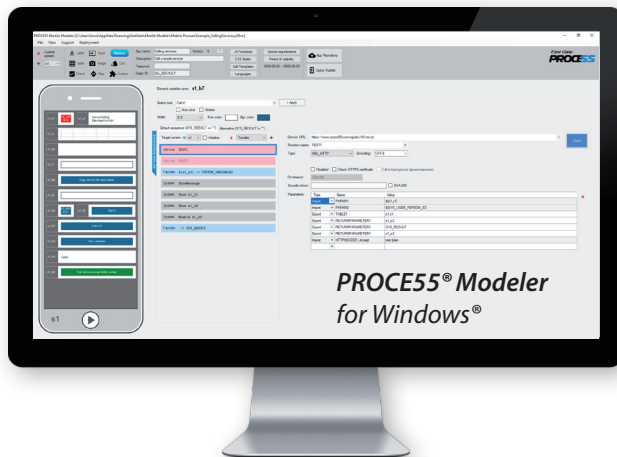
Reactive maintenance
Preventive maintenance
Predictive maintenance
and condition monitoring
Maintenance processing
(notifications and orders)
Cost monitoring
Spare parts management
Equipment and tools
management
Knowledge database
Multimedia documentation
Mobile maintenance



PROCE55® Mobile

The innovative low-code MADP for industry

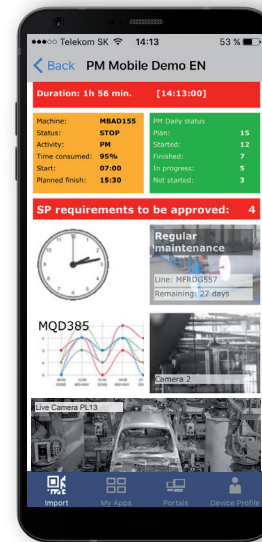
PROCE55® Mobile is our innovative low-code MADP (Mobile Application Development Platform). Optimized for mobilization of any structured business process in fast changing environment.



models of Apps



no compilation



PROCE55® Mobile RTE
Runtime Environment



available for:



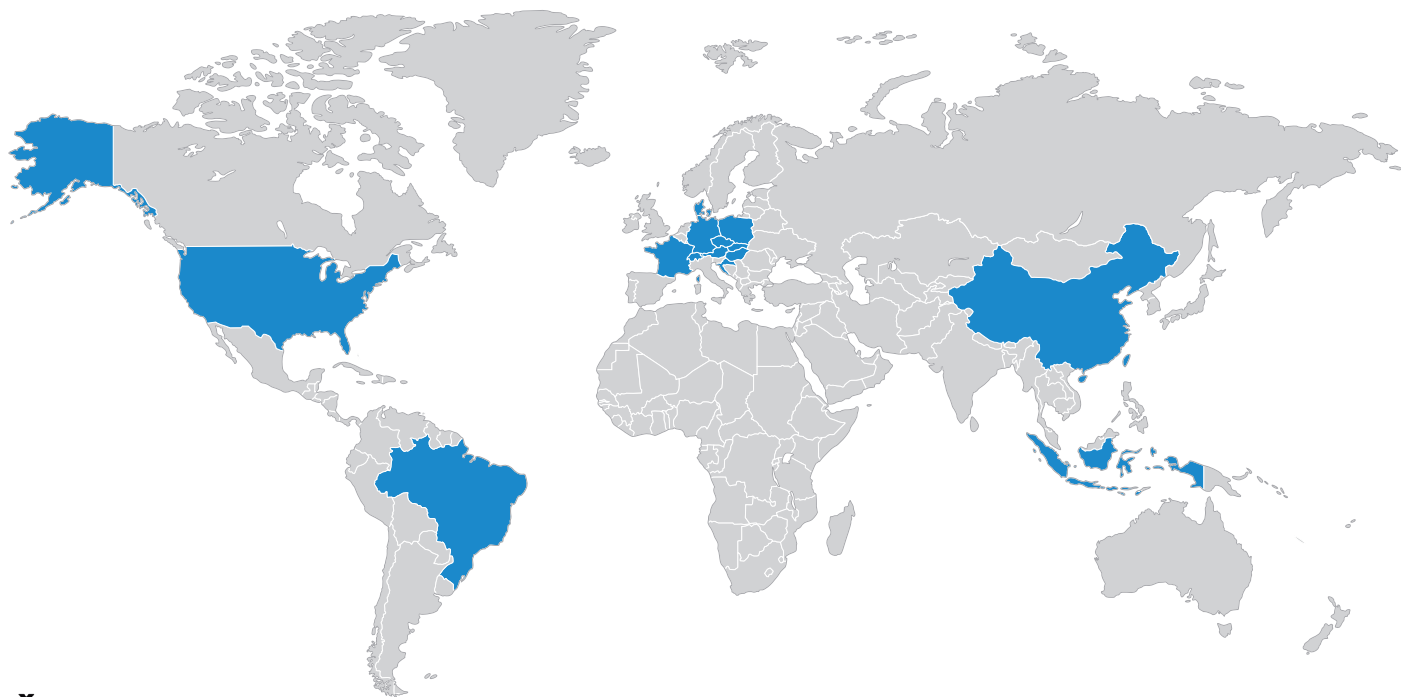
- Visual modeling of Apps, rapid agile development
- Low-code platform but no vendor lock-in
- Client-side application logic with Java Script
- Customized UI (HTML5 & CSS)
- Simple integration of heterogeneous back-ends



WebAPI REST SOAP WS



Let Our Global Experience Work For You



ŠKODA



Who is East-Gate

- ## Company

East-Gate is the expert and innovative technology provider in process automation, system integration and mobilization.

We provide solutions for Industry 4.0.

The applications from East-Gate based on PROCE55® technology control mission-critical business processes worldwide.

- ## Mission

We help our customers to optimize their business processes and achieve the desired operational agility in fast changing business environments.

- ## Product & Services

PROCE55® BPM Suite, PROCE55® Mobile, tools and services.

Applications for business process automation and system integration.

Business process optimization and consulting services.

- ## Customers

Projects in 15 countries on 3 continents.

Industries: automotive, machinery, electronics, chemical, building materials, utilities, food, telco.

Global corporations and growing regional companies.

PROCESS[®]



Improved Process Performance

*www.east-gate.eu
Vienna – Prague – Bratislava*